



UK - Type Examination Certificate

- (1)
- (2) Equipment and protective systems intended for use in potentially explosive atmospheres – **UKSI 2016:1107 (as amended)**
- (3) UK - Type Examination Certificate Number

EPS 22 UKEX 1 235 X

Revision 0

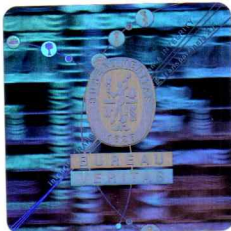
- (4) Equipment: ALI 3.900..EX..-RS5 Sensor EX
- (5) Manufacturer: Fluke Corporation
- (6) Address: 6920 Seaway Blvd
Everett 98203
United States of America
- (7) This equipment and any acceptable variation thereto are specified in the annex to this certificate and the documentation therein referred to.
- (8) Bureau Veritas Consumer Products Services United Kingdom Limited, approved body No. 8507 in accordance with UKSI 2016:1107 (as amended) Part 4, certifies that this equipment has been found to comply with the essential health and safety requirements relating to the design and construction of equipment and protective systems intended for use in potentially explosive atmospheres, given in Schedule 1 of UKSI 2016:1107 (as amended). The examination and test results are recorded in the confidential documentation under the reference number 15TH0166.
- (9) Compliance with the essential health and safety requirements has been assured by compliance with:

EN IEC 60079-0:2018

EN 60079-11:2012

- (10) If the sign "X" is placed after the certificate number, it indicates that the equipment is subject to special conditions for safe use specified in the annex to this certificate.
- (11) This UK - Type Examination Certificate relates only to the design and construction of the specified equipment in accordance with UKSI 2016:1107 (as amended). Further requirements apply to the manufacture of this equipment and its placing on the market. Those requirements are not covered by this certificate.
- (12) The marking of the equipment shall include the following:

 II 2G Ex ib IIC T4 Gb



Certification department of explosion protection

Warrington, 28-10-2022

N. Wilkinson
Natalie Wilkinson



Certificates without signature and seal are void. This certificate is allowed to be distributed only if not modified. Extracts or modifications must be authorized by Bureau Veritas Consumer Products Services United Kingdom Limited. EPS 22 UKEX 1 235 X, Revision 0.



Annex

(13)

(14) **UK - Type Examination Certificate EPS 22 UKEX 1 235 X**

Revision 0

(15) Description of equipment:

The RS5 Sensor EX together with the RS5 Laser EX form a measuring system for the laser-optical alignment of machines. The laser beam of the RS5 Laser EX strikes the two consecutive detector surfaces of the sensor diode of the RS5 Sensor EX. The position of the two impact points as well as the inclination are measured.

The measurement results are transmitted to an external PC via RS232 or to an external module via Bluetooth. From the measurement data, misalignments and manual correction factors can be calculated. LED lights signal compliance with the measurement range.

Maximum ambient temperature range: $-10\text{ °C} \leq T_a \leq +50\text{ °C}$

Degree of protection provided by enclosure: $\geq \text{IP20}$

Electrical data:

Only for connection with certified equipment for power supply and data acquisition. The following intrinsic safe values (floating ground) shall never be exceeded:

Supply circuit:	$U_{o,v}$	=	6 V
Data circuit:	$U_{o,d}$	=	± 6 V
Output current for both circuits in summary:	$I_{o,v} + I_{o,d}$	=	215 mA
Output power for both circuits in summary:	$P_{o,v} + P_{o,d}$	=	1.25 W
Supply characteristic:			rectangular
Maximum permissible external capacitance for $L_o \leq 2\text{ }\mu\text{H}$:	C_o	=	30 μF
Internal capacitance of the RS5 Sensor EX:	C_i	=	25.2 μF
Internal inductance of the RS5 Sensor EX:	L_i	=	0 μH

The supply circuit and the data circuits must be considered to be internally connected. It must be ensured that safety-relevant circuit parts are never damaged by feeding-back of power to the connected devices.

For connection with equipment for power supply and data acquisition, e.g. the following devices provided by Fluke Corporation:

- OPTALIGN smart, type ALI 12.200 EX
- RF-module EX, type ALI 4.621..EX..

(16) Reference number: 15TH0166

(17) Special conditions for safe use:

The conditions for the connection devices shall be taken from the user manual.

(18) Essential health and safety requirements:

Met by compliance with standards.

Certification department of explosion protection

Warrington, 28-10-2022

N. Wilkinson
Natalie Wilkinson

Certificates without signature and seal are void. This certificate is allowed to be distributed only if not modified. Extracts or modifications must be authorized by Bureau Veritas Consumer Products Services United Kingdom Limited: EPS 22 UKEX 1 235 X, Revision 0.

Bureau Veritas Consumer Products Services United Kingdom Limited
<https://www.bureauveritas.co.uk/consumer-products-testing>
+44 (0) 1925 854 360

Registered Office: 31 Kingsland Grange,
Woolston, Warrington, Cheshire, WA1 4RW

Registered in England & Wales
Company Number: 00852439

ZERT-0003-GBR-ZE-EX-V03 / TEMP-0005-GBR-ZE-EX-V01