

VIBCODE®

Test instructions

FLUKE®

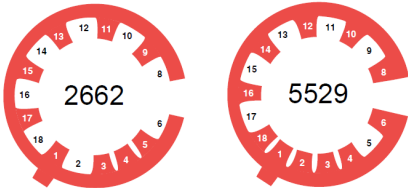
Reliability

After repairing a VIBCODE sensor, the functionality of the coding unit and vibration sensor must be tested.

1. Preparation

To test the **coding unit** you will need:

- VIBCODE encoding tool, VIB 8.962
- VIBCODE demo set, VIB 8.670 SET
- Coding ring with coded number: 2662
- Coding ring with coded number: 5529



To test the **vibration sensor** you will need:

- Vibration calibrator, VC10/ VC13/ VC20 or similar
- Adapter for vibration calibrator, M8/90° - M5, VIB 8.742
- VIBCODE measuring point, VIB 8.680 SET
- Coding ring with coded number: 1234



Required for both tests:

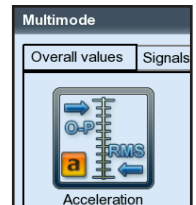
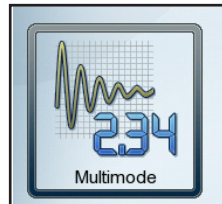
- Sensor cable, straight, VIB 5.437-2.9 or spiral cable, VIB 5.436
- VIBXPERT II instrument
- VIBCODE instructions, VIB 9.834.G
- VIBXPERT II instructions, LIT 53.201.EN
- VIBCODE coding rings, 25 pcs., VIB 8.563 A25

Prepare the coding rings

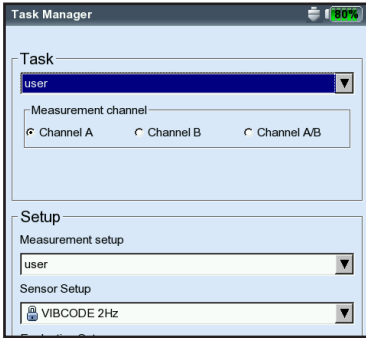
- Encode the three coding rings using the VIBCODE encoding tool as per the previous diagrams.
- Insert coding rings 2662 and 5529 into the VIBCODE demo set.
- Insert coding ring 1234 into the VIBCODE measurement point.

Prepare the VIBXPERT II

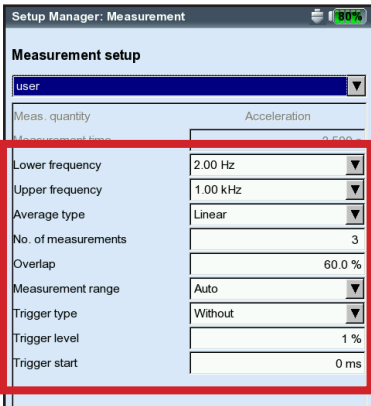
- Switch on VIBXPERT II.
- Enable the **Multimode** operating mode.
- Select the **Acceleration** measurement type in the **Overall values** tab.



- Press the MENU key.
- Select the option **Task Manager**.
- Select the **Task** "user":
- Select **Channel A**.
- In the **Sensor setup** select "VIBCODE 2 Hz".



- Open the measurement setup and set the values shown below:



- Save the settings.
- Press the ESC key twice to open the measurement tasks selection screen.

2. Coding unit

Verify that the numbers of the coding rings in the VIBCODE demo set are correctly identified. Start the previously set multimode vibration measurement and check that the VIBCODE number is displayed correctly on the measurement screen.

This procedure must be carried out for each VIBCODE measurement point at three different plug orientations, each offset by 120°, in order to cover all possible reading errors (Fig. 1).

Start the test

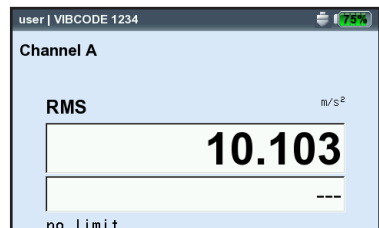
- Select the previously configured measuring task.
- Connect the VIBCODE sensor to the channel set for the measurement task.
- Plug the VIBCODE sensor into the first measurement point (2662) on the VIBCODE demo set (Fig. 2).
- Press the ENTER key to start the measurement. The VIBCODE number will appear in the header of the measurement screen.



- Enter the test result in the test report.
- Press the ESC key.
- Unplug the VIBCODE sensor, rotate it 120°, and plug it back into the same measurement point.
- Repeat the procedure at this and the next plug orientation (240°).
- Repeat the test procedure at the second VIBCODE measuring point (5529).

3. Vibration sensor

- Attach the VIBCODE measuring point 1234 to the vibration calibrator with the VIB 8.742 adapter.
- Position the vibration calibrator upright.
- Plug the VIBCODE sensor into the VIBCODE measuring point (Fig. 3).
- Switch on the vibration calibrator.
- Start the previously configured vibration measurement task. The measured vibration value must be within the predetermined measurement tolerance range ($\pm 10\%$).



- Enter the measurement results in the test report and note whether the test was successful (Y/N).

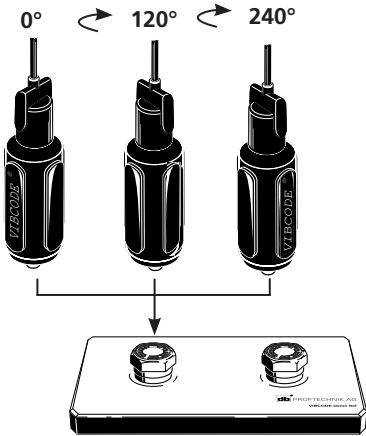


Fig. 1: VIBCODE in three different plug orientations

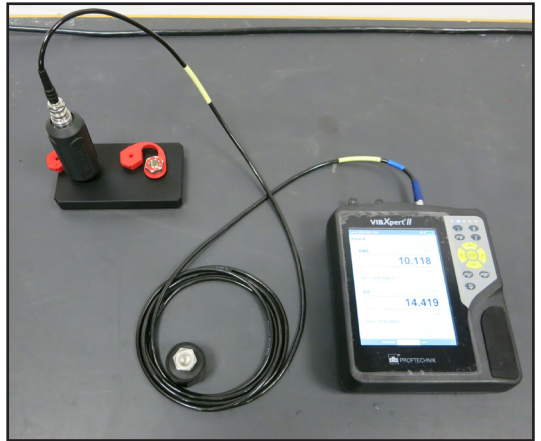


Fig. 2: Test setup, coding unit

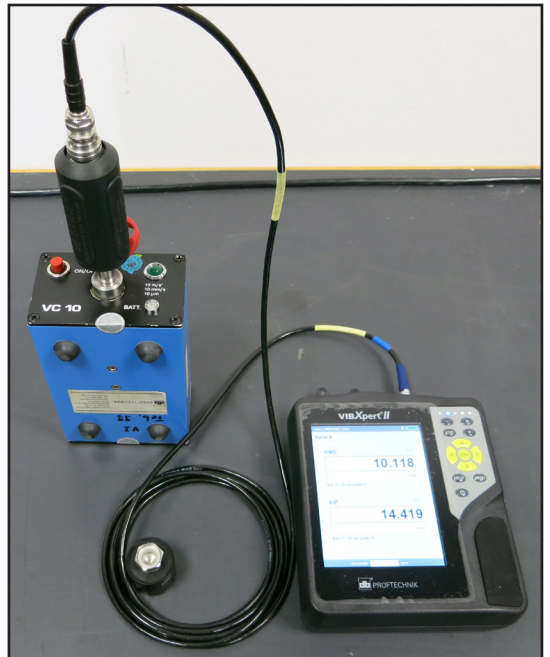


Fig. 3: Test setup, vibration sensor

Test report "VIBCODE"

Note: please copy this page and fill in only the copy.

Coding unit

	2662 ✓/X	5529 ✓/X	Passed Y / N
0°			
120°			
240°			

Vibration sensor

Measured value r.m.s.	Target value / Tolerance	Passed Y / N
m/s ²	10 m/s ² / ± 10%	

General

Reviewer _____

Date _____

VIBCODE serial number _____

Test passed (Y / N) _____

Signature _____

Printed in Germany 0 0594 0505.08.2016



Fluke Deutschland GmbH
Freisinger Str. 34
85737 Ismaning, Germany
+ 49 89 99616-0
www.pruftechnik.com

Productive maintenance technology