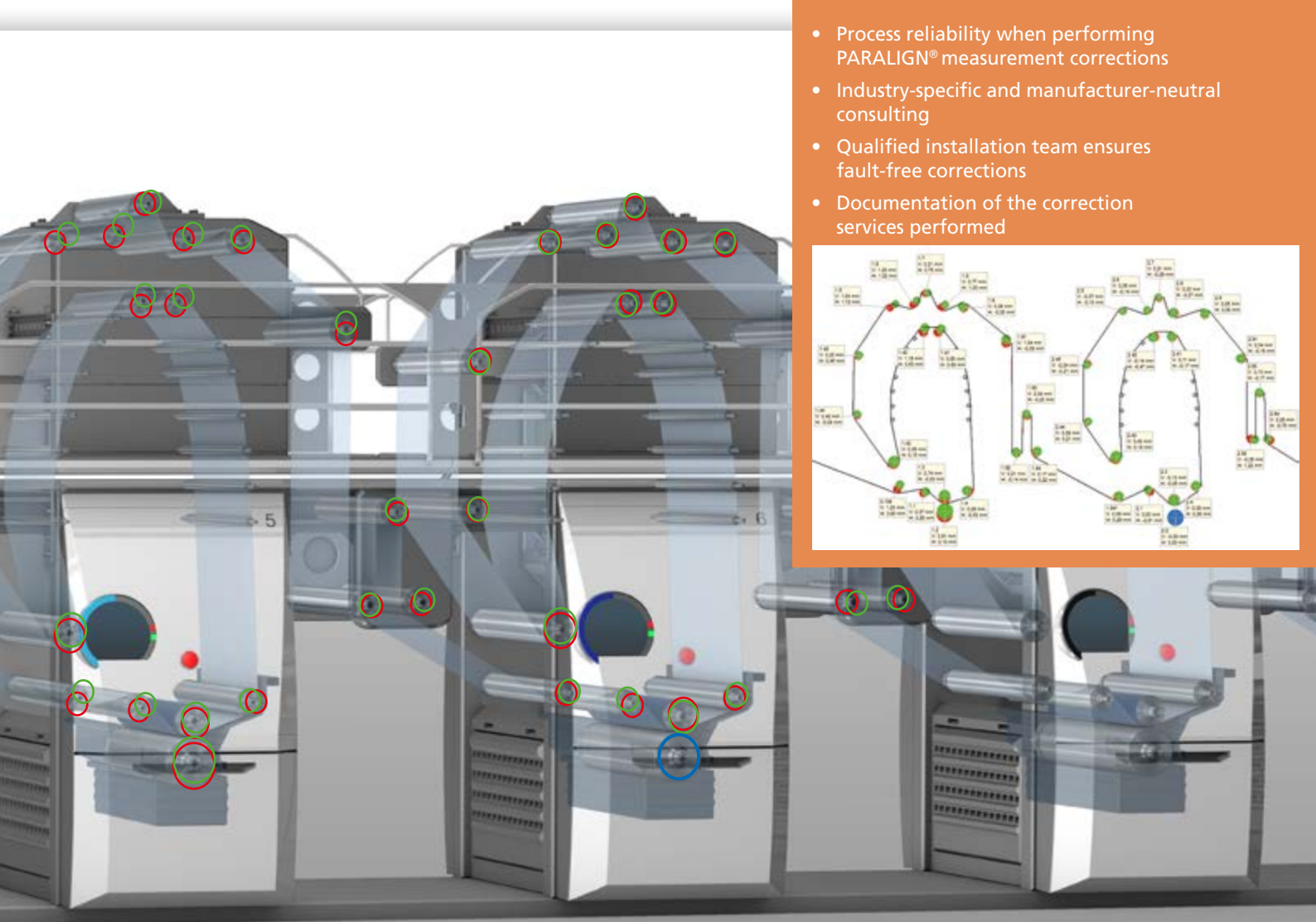
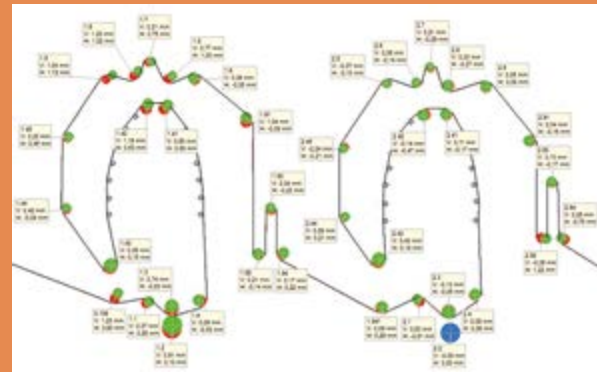


PRUFTECHNIK Service Center

# GEO 2 Roll Alignment with PARALIGN<sup>®</sup> Additional Services



- Process reliability when performing PARALIGN<sup>®</sup> measurement corrections
- Industry-specific and manufacturer-neutral consulting
- Qualified installation team ensures fault-free corrections
- Documentation of the correction services performed

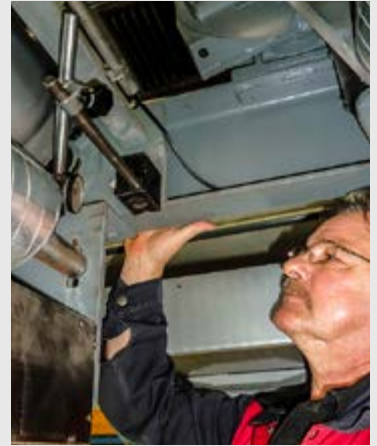


## Roll parallelism: our empirical values for tolerances

Paper industry <sup>1</sup>			
	Absolute values	Angle for 2 m roll width	Angle for 10 m roll width
Felt and wire rolls	±1.00 mm	±0.50 mm/m	±0.10 mm/m
Paper-guiding rolls	±0.50 mm	±0.25 mm/m	±0.05 mm/m
Converting industry <sup>2</sup>			
	Absolute values	Angle for 2 m roll width	Angle for 4 m roll width
Lamination, print	±0.20 mm	±0.10 mm/m	
Extrusion	±0.50 mm	±0.25 mm/m	±0.13 mm/m
Steel industry <sup>2</sup>			
	Absolute values	Angle for 1 m roll width	Angle for 2 m roll width
Rolling mills	±0.20 mm	±0.20 mm/m	±0.10 mm/m
Conveyor systems	±0.50 mm	±0.50 mm/m	±0.25 mm/m

<sup>1</sup> individual rolls may require tighter tolerances

<sup>2</sup> PARALIGN® achieves an accuracy better than 0.05 mm/m under respective conditions



PRUFTECHNIK technician checks the correction

## NEW: PRUFTECHNIK support for your corrective measures

PARALIGN® is a unique alignment system with a revolutionary method for roll alignment. Three high-precision laser gyroscopes ensure highest precision. The measurement results are not influenced by radiant heat. Moreover, reports contain detailed information on roll correction. Despite that, errors can occur during corrections. For example, when the correction time is too tight or auxiliary materials or aids are missing.

Our experienced PARALIGN® experts are available for corrective measures – e.g., after a bearing change. This increases the process reliability of corrections.

Upon request and agreement, we assume the responsibility of chief installation technician or perform smaller corrections utilizing personnel familiar with your site.

If temperature-related and/or design-related default values are required, we measure occurring displacement, tilting, and constraints and consider them during the alignment process with PARALIGN®.

### ADDITIONAL SERVICE 1 – Correction Consulting


Through many years of experience we are able to provide systematized consulting services for your corrections. Many fault patterns can be reduced using PARALIGN®.

### ADDITIONAL SERVICE 2 – Correction Assistance

We offer professional assistance for corrections performed by the customer. Our employees monitor execution and document it as required.


### ADDITIONAL SERVICE 3 – Correction Execution

Upon request, we also help in the actual execution of corrections.




**Fast, precise, and fault-free corrections. Without detours.**

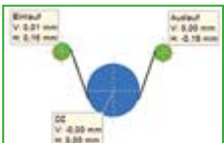
Our technicians are here to help you. Contact us.



Before correction



Correction error



After correction

LEVALIGN® and PARALIGN® are registered trademarks of PRUFTECHNIK Dieter Busch AG. Copying or reproduction of the information in this document, in whatever form, is only permitted with express written approval by PRUFTECHNIK Dieter Busch GmbH. The information in the brochure is subject to change without notice, as PRUFTECHNIK products are continuously further developed. PRUFTECHNIK products are covered by issued or pending patents registered worldwide.

© Copyright 2019 by PRUFTECHNIK Dieter Busch GmbH.



PRUFTECHNIK

Condition Monitoring GmbH

Oskar-Messter-Str. 19-21

85737 Ismaning, Germany

Tel.: +49 89 99616-0

Fax: +49 89 99616-200

service@pruftechnik.com

www.pruftechnik.com

A member of PRUFTECHNIK group