

FLUKE®

Reliability

OMNITREND® Center

Installation and Start-up

db® PRÜFTECHNIK



Version: 2.7.1

Edition: 8/5/2022

Doc.no: LIT 82.201.EN

Translation of the german manual

Information in this document is subject to change without notice. The software described in this document is distributed under a license agreement. The software may be copied only in accordance with the terms contained in this agreement. This document or parts thereof may not be reprinted or reproduced in any form without written permission of Fluke.

OMNITREND is a registered trademark of PRÜFTECHNIK Dieter Busch AG.

© **Fluke. All rights reserved.**

Fluke Deutschland GmbH
85737 Ismaning, Germany
www.pruftechnik.com

Contents

1 Introduction	5
1.1 Welcome to OMNITREND Center	5
1.2 Prior to starting	6
1.3 Safety	7
1.4 Service addresses	8
1.5 System requirements	9
2 Installation	13
2.1 Setup infrastructure	13
2.2 Server installation	14
2.3 Server configuration	15
2.4 Install Server modules	19
2.5 Server start/stop	20
2.6 Client installation	21
2.7 Single user installation	22
2.8 Installing PT Link	22
2.9 Update	24
3 Start-up	25
3.1 Starting the client / single user application	25
3.2 Connect to server	26
3.3 Disconnect / detach connection to server	27
3.4 OMNITREND Center activation	28
4 Index	31

Empty page

1 Introduction

1.1 Welcome to OMNITREND Center

OMNITREND Center is a newly developed condition monitoring software for operating condition monitoring and diagnostics on rotating machines.

OMNITREND Center processes machinery condition data that was recorded using a mobile condition monitoring system (e.g. data collector) or a permanently installed condition monitoring system (online CMS) made by PRUFTECHNIK.

OMNITREND Center supports data evaluation by offering a variety of practical analysis functions. All results can be clearly documented and archived in the form of reports and findings. The condition monitoring systems are configured for data acquisition in the software using measurement and machine templates.



1.2 Prior to starting

Check the delivery content

On delivery, check the goods for damaged or missing parts. Note any possibly objectionable parts on the shipping documents and claim them with the forwarder or your local PRÜFTECHNIK sales partner.

Responsibilities

As operator, you must ensure that the requirements for software installation and start-up are met:

- Provision of a qualified expert for software installation.
- Provision of the infrastructure required for installation and operation ("System requirements" on page 9).

Notes regarding these instructions

These instructions are a part of the product. As such, they must be kept and updated throughout the product service life. These instructions must be handed over to any subsequent owner or user of the product.

These instructions describe the installation and start-up of the OMNITREND Center PC software. Please refer to the OMNITREND Center Online Help by pressing the **F1** function key after starting the program to access a complete description of the operation.

These instructions apply to software version 2.7.1 and higher.

Disclaimer

The information in these instructions are exclusively for informational purposes and subject to change. Although these instructions have been prepared with utmost care, errors cannot be excluded.

PRÜFTECHNIK Condition Monitoring GmbH shall not be liable for any subsequent damage caused by errors or inaccuracies that could be contained in these instructions.

PRÜFTECHNIK Condition Monitoring GmbH shall not be liable for any damage resulting from non-compliance or partial compliance with these instructions.

Text conventions

The texts are characterized as follows according to their function:

- Explanation: Text without indent
- Instruction or enumeration: List with • as bullet points
- Information: Text on **gray background** with prefixed **Icon**
- Example: Text on **blue background**
- Labeling, name, command, menu entry, button: Text **in bold**

Abbreviations

The following abbreviations are used:

- OMNITREND Center PC software = OMNITREND Center, software, program
- OMNITREND Center utility = Utility
- Condition Monitoring System = CMS, measurement device
- Industrial Internet of Things = IIoT

1.3 Safety

OMNITREND Center contains important machine information, whose loss can cause considerable costs. For this reason, a reliable data backup is required to avoid consequential damage caused by data loss.

Qualification

Installation and start-up may only be performed by a qualified IT expert. This expert must be familiar with and follow these instructions.

Intended use

OMNITREND Center is a Windows-based PC software for processing of machine condition data measured using PRUFTECHNIK measurement devices.

The software may only be operated within the specifications given in these instructions.

PRUFTECHNIK shall not be liable for any possible damage caused by misuse.

License agreement

The license agreement (EULA) for OMNITREND Center can be found on the PRUFTECHNIK website.

1.4 Service addresses

Feel free to contact us in case of questions:

- Tel. + 49 89 99616-0

Fluke Deutschland GmbH

Freisingerstr. 34

85737 Ismaning, Germany



Please have your software activation code ready when contacting our hotline. You can find this code on the package of the installation medium.

1.5 System requirements

Setup recommendations

Setup recommendations are dependent on expected usage.

Parameters listed are minimal suggested for given installation size.

Recommendations are made for the following scenarios:

Size of installation	Number of nodes in machine tree	Data volume produced by all devices
small	< 10k	< 3 GB/month
medium	from 10k to 50k	from 3 to 30 GB/month
large	> 50k	> 30 GB/month

OMNITREND Center Client/Single User

- Hardware:

Size of installation	CPU	RAM OMTC Client without Single User	RAM OMTC Client with Single User
small	Quad core 2.2 GHz	4 GB	8 GB
medium	Quad core 2.4 GHz	6 GB	8 GB
large	Quad core 2.4 GHz	8 GB	16 GB

- Storage:
 - resistant to multiple rewriting; capable of delivering at least 200 IOPS in random 4k read/write scenario
 - SSD storage recommended (for Single User - strongly recommended)
- Operating system:
 - 64 bit: Windows 10 Professional
- Browser:
 - Internet Explorer 11
 - Microsoft Edge (current version)
 - Google Chrome (current version)
- Ports:
 - 42427 and 42428 for single user version
 - 42450, optional for messaging in the client/server version
- Display:
 - 3D graphics card

OMNITREND Center Server

- Hardware:

Size of installation	CPU	RAM
small	Quad core 3 GHz	8 GB
medium	Quad core 3 GHz	8 GB
large	Quad core 3 GHz	12 GB

- Storage
 - resistant to multiple rewriting; capable of delivering at least 1000 IOPS in random 4k read/write scenario
 - SSD strongly recommended
- Operating system:
 - 64 bit: Windows 10 Professional, Windows Server 2012, Windows Server 2016, Windows Server 2019
- Ports:
 - 8011 and 8081, and two free ports for client connection
 - 9998 to manage Email-Center
- For MS SQL Server databases
 - Microsoft SQL Server 2012, 2014, 2016
 - In conjunction with an online device: Standard edition or higher

Supported measuring device types

- Online CMS (Client-Server only):
 - VIBGUARD (Kernel version: KW48/2020 or later)
 - VIBGUARD compact (Kernel version: KW09/2020 or later)
 - VIBROWEB XP (not supported anymore)
 - VIBRONET Signalmaster V3 (KW04/2020 or later)
- Handheld devices (Offline CMS): VIBSCANNER 2, VIBXPART II, VIBXPART EX, VIBXPART I

PT Link

- Hardware:

Size of installation	CPU	RAM
small	Dual core 1 GHz	2 GB
medium	Dual core 2.2 GHz	4 GB
large	Quad core 2.2 GHz	4 GB

- Network:

Case	Network
Devices to PT Link	100Mbps

Case	Network
PT Link to OMTC	1Gbps

- Storage
 - 500MB of free space needed for installation.
 - For data storage high endurance medium is needed, resistant for multiple writing. High TBW storage recommended.
 - Storage capable of 200 IOPS for random access read/write scenario recommended.
 - Amount of storage needed strongly depends on number of devices connected and measurement setup.
- Operating system:
 - 64 bit: Windows 10 Professional, Windows Server 2016

Empty page

2 Installation

OMNITREND Center can be installed as a **single user** or as a **client-server version**. The client-server installation is described in the following section. For details on the single-user installation, see section "Single user installation " on page 22



OMNITREND Center USB box,
VIB 8.200-USB

A: Activation Code

USB: Installation medium (USB pen drive)

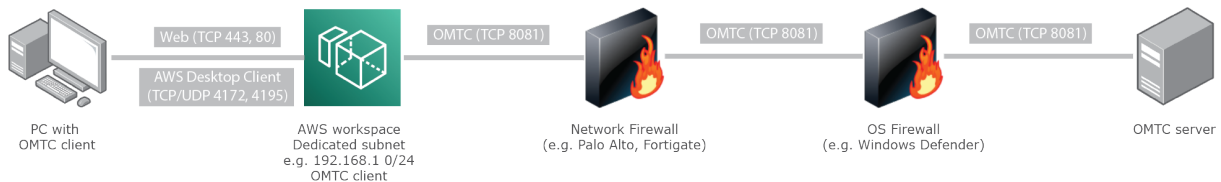
2.1 Setup infrastructure

This chapter describes recommended best practices for secure installation of OMNITREND Center (v2.6 and older) on your cloud or on-premises network to help mitigate potential risk to your corporate network. The application and its components are designed for use on local private networks and should not be exposed to the public internet.

1. Install OMNITREND Center application and its required components in a secure network.
2. Use only secure VPN when connecting to the application and its components from outside the corporate intranet (see details below).
3. If running in a cloud environment, use managed desktop solutions (AWS Workspaces/Azure VDI) to maintain connectivity to OMNITREND Center server (see details below).

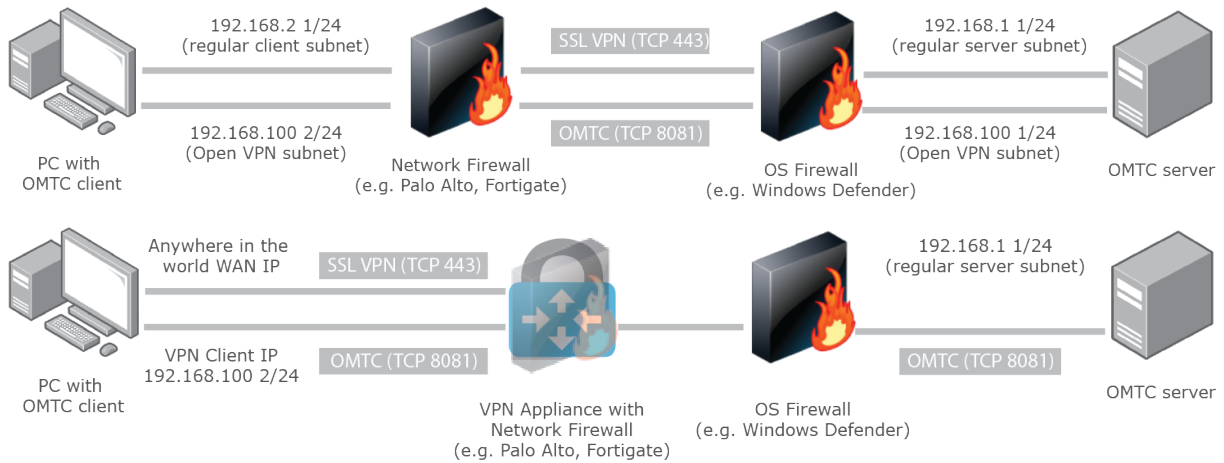
Deployment in cloud environment via managed desktop solutions

If you run the server in AWS/Azure environment utilize managed desktop solutions (AWS Workspaces / Azure VDI) available in the service to maintain connectivity to OMTC server. You can provide the virtual desktops (with OMTC client installed) in a separate subnet and allow only this subnet to reach OMTC server by using any firewall software (e.g. Windows Defender) running on the server machine, or any hardware firewall/network ACL to limit access on the networking device level.



OpenVPN (as an example)

You can install OpenVPN server on the same machine where OMTC server application is running. OpenVPN will create a virtual network card where you can assign a dedicated IP for the tunnel. In OMTC server you can disable listening on all other network interfaces except the virtual one provided by OpenVPN. On all PCs with OMTC client software that require access to the server, you will need to install OpenVPN client and connect them to the OpenVPN server. They can access then OMTC server over secure VPN tunnel.



2.2 Server installation

The **server** application and the corresponding modules (DAP, License server, Email center) are installed on a computer that is continuously in operation and accessible at all times.

i You must have Windows administrator rights to perform the installation.

- Connect the installation medium to the server PC.
- Open the file **Install_omnitrend_center_server_xxyyy.exe** in the folder **Server**.
- Confirm the subsequent Windows user account control safety prompt by clicking 'Yes'. The installation wizard starts.
- Click on **Next**, to open the next dialog window.
- Select the installation folder. Click on **Next**.
- Enter the activation code provided on the package. Click on **Next**.
- **i** Be sure to enter the code in groups of 4, separated by hyphens.
- Select the folder, where the server should store data. Click on **Next**.
- Click on **Install**, to start the server installation.
- After successful installation, click on **Finish**. The 'OMNITREND Center Utility' program starts, which allows you to access and operate the server.

2.3 Server configuration

You configure the server with the program **OMNITREND Center Utility**.

i You need Windows administrator rights to start the utility.

i Only for **MS SQL** server: For startup, the databases for OMNITREND Center must be created and accessible on the server. The configuration for access to the server database is done in the **settings/database settings** menu.

i Definition of terms:

Server database = Database with the server-specific content.

Measurement data database = Database with the measurement data (hereinafter also referred to as “database”).

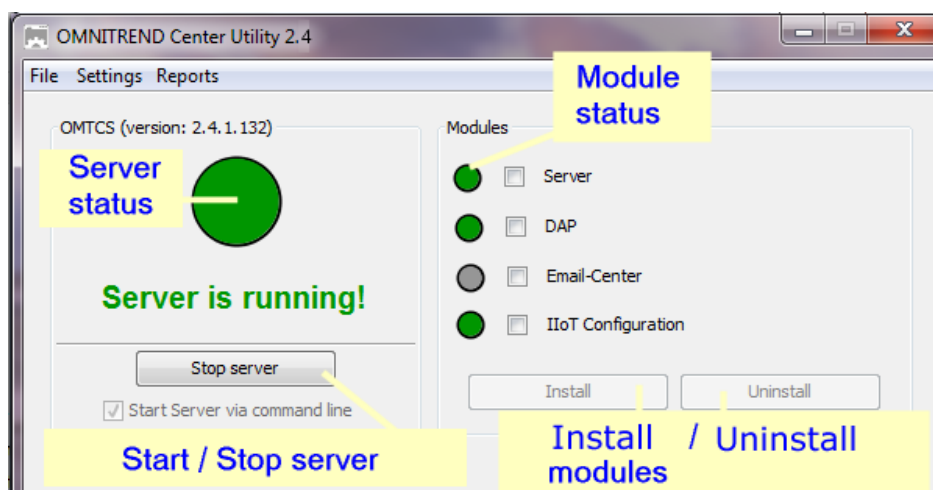
Up to and including version 2.1, the format of the server database was **HSQL**; the measurement data existed in a file in **HDF5** format.

From version 2.2 onwards, OMNITREND Center also supports the **MS SQL** database format. Since then, the server database can also be operated in MS-SQL format and the measurement data can be stored in a MS-SQL database. Different procedures therefore arise for accessing and starting the server database.

Starting the OMNITREND Center utility

- Start the utility via the Windows Start menu:

Programs /PRUFTECHNIK /OMNITREND Center Server / OMNITREND Center Utility



The utility indicates server status via traffic light:

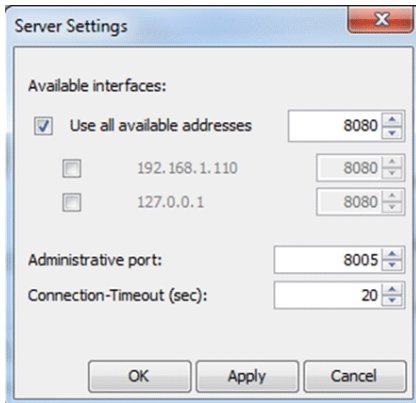
- Grey:** Server is stopped | **Green:** Server is running | **Red:** Server reports error

You can change the server configuration in the menu **Settings**.

i The server must be stopped, when making changes to the configuration.

IP settings

Click on **Settings/IP settings**:



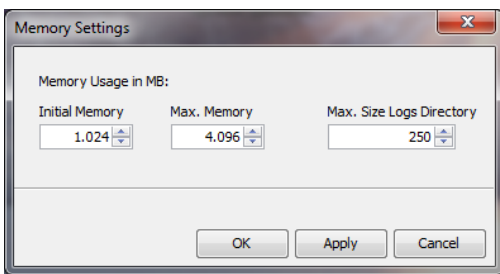
i These settings apply to the OMNITREND Center server and the ports at which it is accessible. The set ports must be enabled in the firewall settings for the server to be accessible.

Here you may enter the IP address and port, via which the server can be accessed. The following options are available:

- **Use all available addresses:** The server can be accessed via all IP addresses in use on the server PC. If you would like to access the server via one specific IP address only, enable it in the list. Enable IP address 127.0.0.1, where the server and client are installed on the same PC ('localhost'). By default, the IP address used is the one currently assigned to the server.
- **Administrative port:** Port for sending start and stop commands to the server.
- **Connection timeout (sec):** Duration following which the connection to the client is terminated where no communication takes place.

Memory space

Click on **Settings/Memory Settings**:



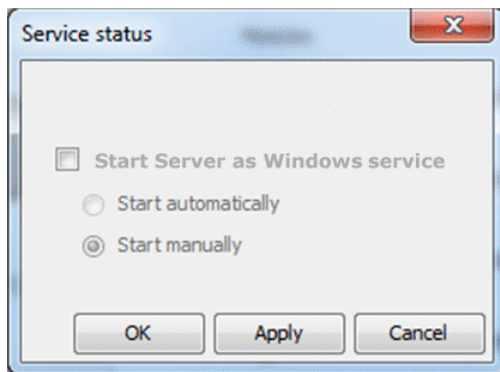
Here you can define the available RAM storage space (in MB) for the server.

- **Initial Memory:** Minimum size
- **Max. Memory:** Maximum available storage space
- **Max. Size Logs Directory:** Maximum storage space for log files on the hard disk.

i Set the maximum value as high as possible, taking into account the space required for the operating system and additionally running applications.

Start Options

Click on **Settings/Windows Service**:



Here you can specify whether the server is installed as a **Windows service** and should run in the background after startup. If the server is installed as a Windows service, you can start it either **manually** via the utility, or have it start **automatically** when the PC is booted.

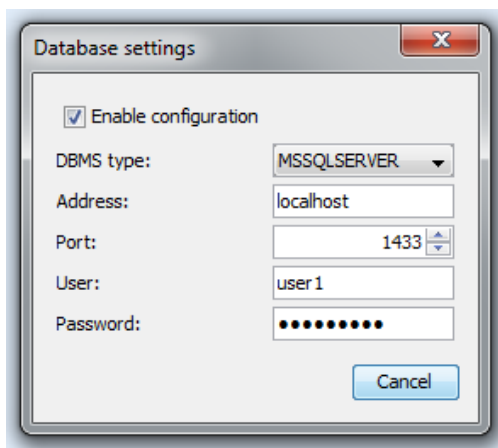
Install server as Windows service and set the start option:

- Activate the **Start Server as Windows service** checkbox.
- Select the desired start option: **Start automatically** or **Start manually**.
- Click on **Apply** to apply the settings.
- Click on **OK**.

If the server is not installed as a Windows service, you must start it via the utility ("Server start/stop" on page 20).

Database configuration (MS SQL)

Click on **settings/database settings**.



Here you enter the connection data for accessing the MS SQL server database. Use this configuration if a server database in MS SQL format is set up for the OMNITREND server. You generally obtain the connection data from the administrator of the MS SQL server.

Server status report

Click on **Reports/Generate status report**.

The server configuration settings are compiled into a file, which, once created, can be opened directly.

Log file

Click on **Reports/Show logfile**.

Each event (status, error) on the server is chronologically recorded in a log file.

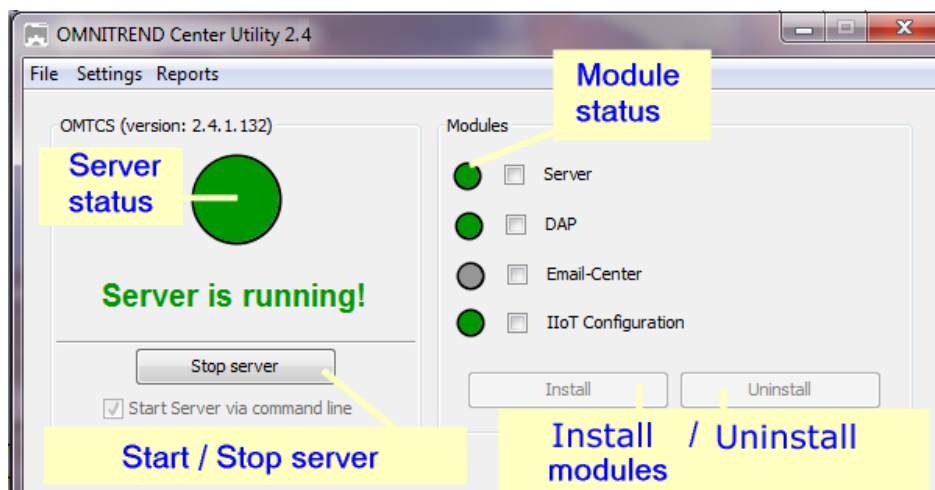
2.4 Install Server modules

In order to be able to use server modules 'Server', 'DAP', 'Email Center', you will need to install them via the utility as follows.

i The server must be stopped, during server modules installation.

- In the **Modules** field, check the modules to be installed.
- Click on **Install**. The modules and server statuses are regularly checked, and displayed via the traffic light indicator:
 - **Grey**: The module is not installed.
 - **Green**: The module is installed and the server is running.
 - **Yellow**: The module is installed and the server is stopped.
 - **Red**: Error. The module is unavailable.

i A module may be uninstalled again as required, for e.g. more efficient use of system resources.




2.5 Server start/stop

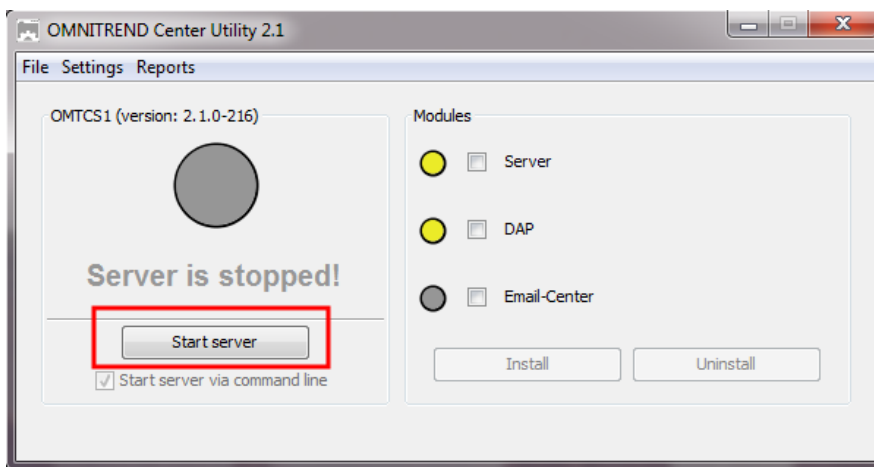
The server can be started as follows:

- The server starts **automatically** when the server PC is booted, if the 'Automatic' **start option** is enabled in the Utility (" **Start Options**" on page 17).
- You **manually** start the server via the Utility, if the **Manual** start option is enabled in the Utility, or the server is **not** installed as Windows service.


To start the server via the **Utility** proceed as follows:

 You need Windows administrator rights to start the Utility.

- Start the Utility either by double-clicking on the Utility icon  on the desktop



- On the utility home page, click on **Start server**.

 The option **Start server via command line** opens a command line window, for detailed analysis of the start sequence. It is always enabled, when the server start is not configured as a Windows service.

The server can be stopped as follows.

Server is installed as a **Windows service**:

- The server is stopped **automatically** when the server PC is shut down.
- You stop the server via the utility: On the utility home page, click on **Stop server**.

Server is **not** installed as Windows service

- You stop the server via the utility: On the utility home page, click on **Stop server**.


2.6 Client installation

The **client** application is generally installed on a workstation PC that can communicate with the server PC via a network. If necessary, and for initial startup, the client can also be installed directly onto the server PC.

 You must have Windows administrator rights to perform the installation.

For client application **installation** proceed as follows:

- Connect the installation medium to the client PC.
- Using Windows Explorer, open the installation medium contents.
- Open the file **Install_omnitrend_center_client_xxyyy.exe** in the folder **Client**.
- Confirm the subsequent Windows user account control safety prompt by clicking 'Yes'. The installation wizard starts.
- Click on **Next**, to open the next dialog window.
- Select the option **Client/Server**. Click on **Next**.
- Select the installation folder. Click on **Next**.
- Select the folder, where the client should store data. Click on **Next**.

 This folder is created only in case you use OMNITREND Center as a single user application.

- In the next screen, select the option **Yes, allow InstallShield to add the firewall rule**. Click on **Next**.
- Click on **Install**, to start the client installation.
- After successful installation, click on **Finish**.

2.7 Single user installation

 You must have Windows administrator rights to perform the installation.


OMNITREND Center Single User installation



OMNITREND Center USB box,
VIB 8.200-USB

A: Activation Code

USB: Installation medium (USB pen drive)

- Connect the installation medium to the client PC.
- Using Windows Explorer, open the installation medium contents.
- Open the file **Install_omnitrend_center_client_xxxyyy.exe** in the folder **Client**.
- Confirm the subsequent Windows user account control safety prompt by clicking 'Yes'. The installation wizard starts.
- Click on **Next**, to open the next dialog window.
- Select the option **Single user**. Click on **Next**.
- Enter the activation code provided on the package. Click on **Next**.
-  Be sure to enter the code in groups of 4, separated by hyphens.
- Select the installation folder. Click on **Next**.
- Select the folder, where the program should store data. Click on **Next**.
- In the next screen, select the option **Yes, add the firewall rule now**. Click on **Next**.
- Click on **Install**, to start the installation.
- After successful installation, click on **Finish**.

2.8 Installing PT Link

Install PT Link on a computer ideally in the same local company network in which the online CMS is also connected. The 'external' transfer of the measurement data to the OMNITREND Center server is done via a secure connection (https). The requisite safety certificates are created when a connection with the OMNITREND Center server is established for the first time. If necessary, you can exchange these PRUFTECHNIK certificates for your own certificates (see [Exchanging a safety certificate](#)).

The computer on which PT Link is installed should be in service permanently in order to safeguard measurement data traffic.

The installation file is located on the installation medium in the OMNITREND Center USB box. Prior to installation, check the system requirements for the PT Link software (see [System requirements](#)).



OMNITREND Center USB box, VIB 8.200-USB



USB: Installation medium

For PT Link **installation** proceed as follows:

i You must have Windows administrator rights to perform the installation.

- Connect the installation medium to the computer.
- Open the installation medium contents in Windows Explorer.
- Run the **PT_Link_1.0.0.yyy.exe** file in the **PT Link** folder. The installation wizard starts.
- Click on **Next**, to open the next dialog window.
- Select the installation directory. Click on **Next**.
- Select the folder in which PT Link is to store the measurement data. Click on **Next**.

i This folder is used as intermediate storage if the connection to OMNITREND Center is interrupted.

- Click on **Install**.
- Confirm the subsequent Windows user account control safety prompt by clicking 'Yes'. The installation starts.
- After successful installation, click on **Finish**.

Starting PT Link

Open a browser and enter the following address in the address line:

http://localhost:8089

The login page appears. The data for the initial login is as follows:

- Username = **user**
- Password = **password**

Change the password after login. Further information about configuration and operation of the PT Link software can be found in the associated online help.

2.9 Update

OMNITREND Center is continuously further developed and improved. The current version can be downloaded free of charge from the PRUFTECHNIK webpage:

www.pruftechnik.com



You can also contact your local sales partner regarding the update.

A. Before the update

- Transfer all **measured data** from the portable measuring device into the OMNITREND Center database.
- Check the current **system requirements** for the PC (server/client PC) ("System requirements" on page 9).
- Create a **backup copy** of the current database. Proceed as follows:
 - **SQL database:** Create the backup copy in MS SQL Management Studio.
 - **HSQL database / single-user version:**
 - Write down the **database ID** (Administration Perspective / Server Editor / Server section).
 - Exit OMNITREND Center (Client, Server, Single user). Wait about 5 minutes until all processes are finished.
 - Open the database folder. In a standard installation the databases are stored under:
Client-Server = C:\Users\Public\Documents\PRUFTECHNIK\OMTCS\databases
Single user = C:\Users\Public\Documents\PRUFTECHNIK\OMTCC\databases
 - The database is located in the folder named with the corresponding **database ID**.
 - Pack the database folder in a ZIP archive.
 - Save the ZIP archive in a safe place.

B. Install update



You need to have Windows administrator rights to run the update files.

- Download the update file (*.exe) for the server and client application from the PRUFTECHNIK homepage.
- Copy the file into an empty folder.
- Run the file.

Details regarding the individual installation steps can be found in sections "Server installation" on page 14 and "Client installation" on page 21 or .

C. After the update

- Update the firmware in the portable measuring devices and the kernel in the online CMS. You can obtain the latest versions from your local sales partner.
- When using **Asset View**, update all online configurations in OMNITREND Center and transfer these to the online CMS.

3 Start-up

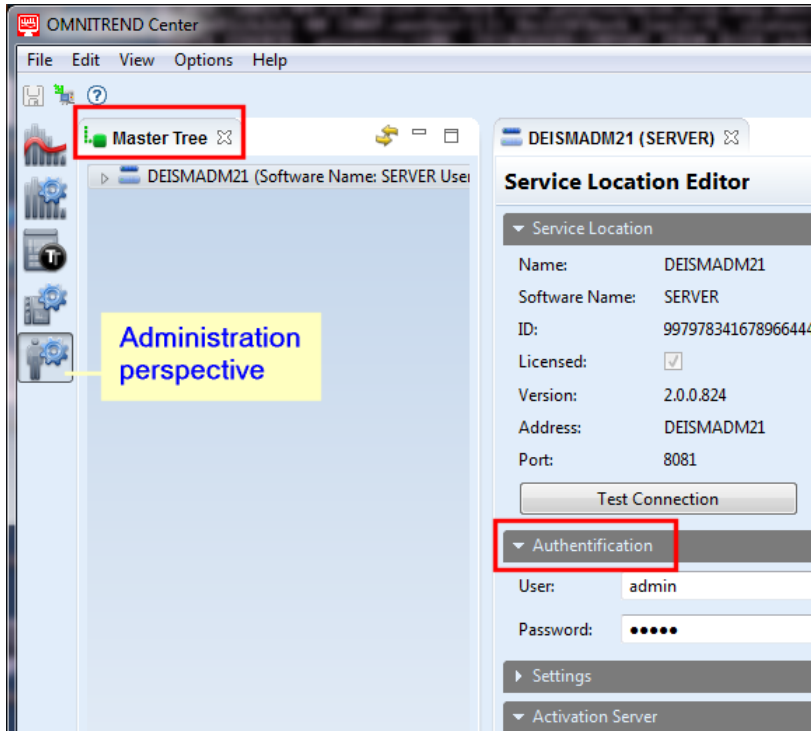
3.1 Starting the client / single user application

Prerequisite: Before you start the client, the server needs to be running and the server module made available.

Procedure: Double-click on the program icon on the desktop



Following the start sequence, the program window is displayed in the administration view.



i Client-Server: If the server and client are installed on the same computer, the client automatically establishes the connection to the server. If this is not the case, you need to set up the server connection manually.

i Single User: In this version, the “client” and “server” are contained in one application and therefore connect automatically after starting the program.

3.2 Connect to server

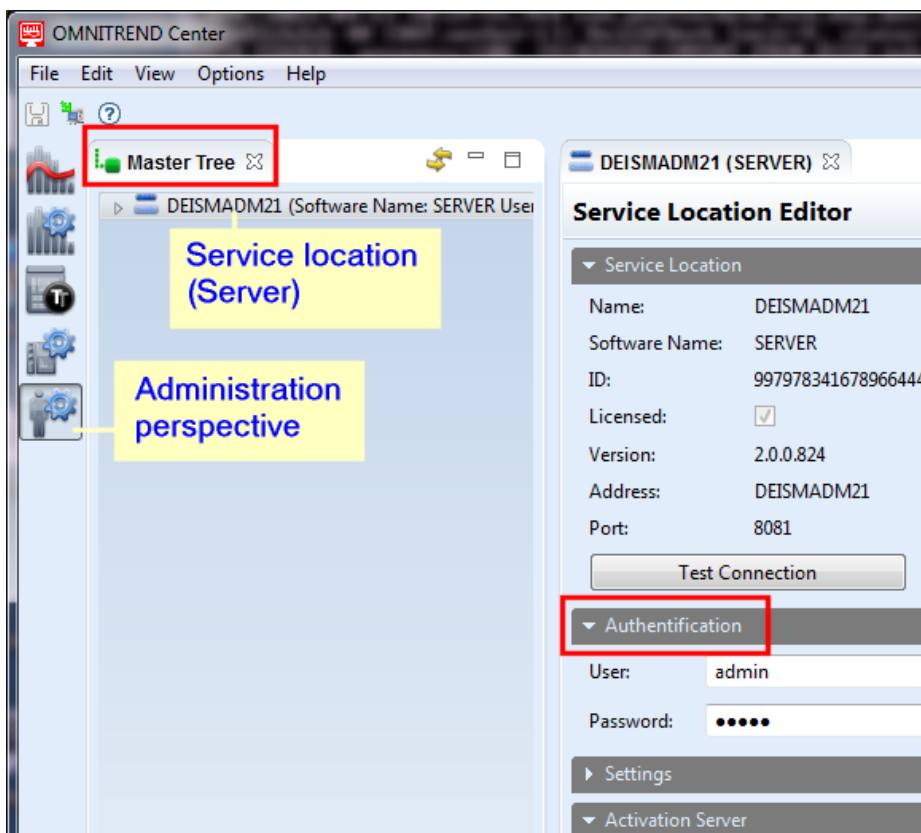
The following section applies to a client-server installation for which the client and server are installed on **different** computers.

To establish connection to the server:

- Using the right mouse button, click in the upper left part of the window (**master tree**). A dialog menu appears.
- Click on **Attach Server**. A dialog window appears.
- Enter the connection data:
 - **Address:** IP address/name of PC, on which server is installed.
 - **Port:** Interface, via which the server should be contacted ("IP settings" on page 16).
 - **Test connection:** Test server connection. Where connection is successful, the message: 'server found at the specified address.'
 - **User:** Enter the following user name: **system-admin**
 - **Password:** At first login, enter the following password: **system-admin**

i The user name **system-admin** is provided for the **system administrator** user role, and cannot be changed. You can change the corresponding password during initial start-up and/or at any time later on in the **Authentication** section using **Change password**.

- Click on **Finish**. The client connects to the server. The server checks the user data, and is subsequently displayed in the master tree.



3.3 Disconnect / detach connection to server

 The following section applies to a **client server** installation.

The connection between client and server can be



- **detached permanently** or
- **disconnected temporarily.**

Examples:

The server PC is down for maintenance. In this case, you **detach** the connection, so that connection data and activated licenses are retained.

You administer multiple servers, but have only a single server license available to you. In this case, **disconnect** the connection to the current server, so that you may use the license for another server.

To disconnect/detach the server connection

- Using the right mouse button, click on the server in the master tree. A dialog menu appears.
- Click on...
 - **Detach** 
The server is deleted from the master tree. To restore the connection, follow the instructions in the section "Connect to server" on page 26
 - **Disconnect Server.** 
The server remains visible in the master tree. To restore the connection, in the dialog menu, click on **Connect Server.**

3.4 OMNITREND Center activation

Together with the OMNITREND Center software, you have been supplied with the necessary licenses. The activation of these licenses is done either automatically via Internet, or manually via a license file, which you will need to request from PRÜFTECHNIK.

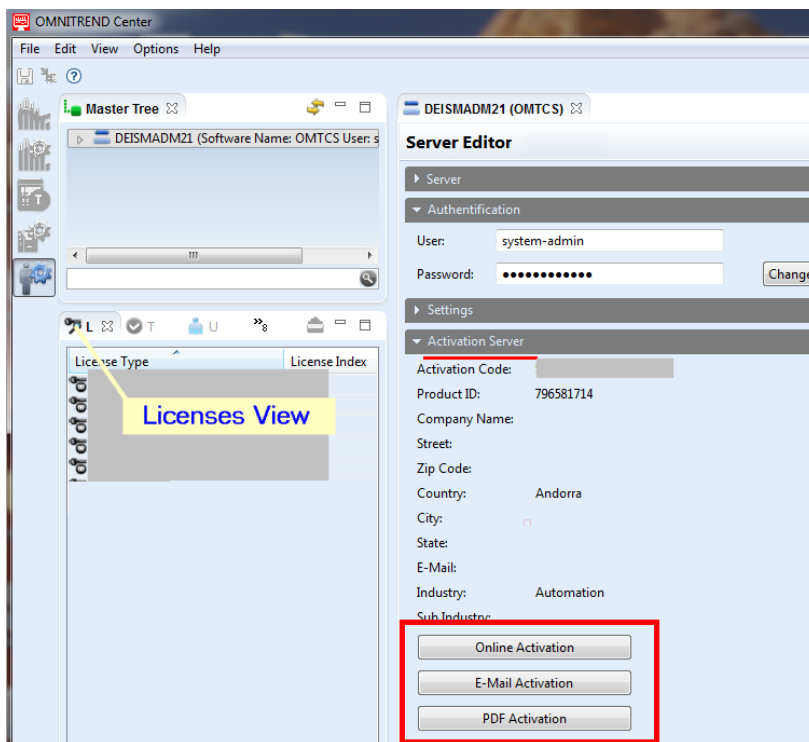
You have the following activation options:

Automatic activation:

Automatic activation takes place, when the server has an Internet connection, and can connect to the PRÜFTECHNIK activation server.

i The activation server connection data are preset.

- Switch into the Administration perspective as required.
- In the master tree, double-click on the server to open the **Server editor**.
- In the editor window, open section¹ **Activation server**.
- Click on **Online Activation**. A dialog window appears.
- Enter the required data, and click on **Finish**.
The server connects to the PRÜFTECHNIK activation server. This checks the licenses and automatically activates the software. Licenses are displayed in the 'License' view (lower left part of window).



Manual activation

If the server has no Internet connection, request the license file as follows, via email or fax:

Click in section **Activation server ...**

¹Grouping of related functions and fields in the Editor window

- ... on **Email Activation**. A dialog window appears.
- Enter your customer data, and click on **Finish**.
The default email program on the client PC is launched, and an email containing the required activation information appears.
- Send the email.

OR

- ... on **PDF Activation**. A dialog window appears.
- Enter your customer data, and click on **Finish**.
A PDF file is created, and displayed in Adobe Acrobat Reader.
- Print the file, and fax the copy to the fax number provided.

You will receive the license file via email.

Import the license file as follows:

- In the main menu, click on **File/Import**. A dialog window appears.
- Check the **License** import assistant, and click **Next**.
- Select the required server, to which the license should be imported.
- Specify the folder, in which the license files (*.lic) are stored:
Click on **Select folder**, and navigate to the target folder, or enter the path in the field **Folder**.



With **Search subfolders** you will expand the search to include subfolders. When doing so, note that, depending on the size of the folder structure, the search may take some time.

- Select the file in the field **Files**.
- Click on **Finish**. The file is imported.
- Confirm the import message with **OK**.
The licenses appear in the 'License' view (bottom left of window).

Retrospectively obtain licenses

Contact your PRÜFTECHNIK distribution partner, if you require additional licenses. As well as the required license descriptions, PRÜFTECHNIK will require the activation code can be found on the installation medium and the customer data, which you must provide when requesting a license file ("**Manual activation**" on page 28).

You will be notified, as soon as the new licenses are made available on the PRÜFTECHNIK activation server. If you require manual activation, you will be sent via eMail the relevant license file.

Empty page

4 Index

A

Activation server 28

C

Client installation 21

Client starting 25

Connect to server 26

I

Interrupt/disconnect connection to server 27

L

Licenses activation 28

S

Server configuration 15

Server installation 14

Server modules provisioning 19

Server start 20

Server status report 17

Service addresses 8

Setup infrastructure 13

Single user installation 22

System requirements 9

U

Update 24



LIT 82.201.EN.08.2022

Fluke Deutschland GmbH
85737 Ismaning, Germany
www.pruftechnik.com

 **PRÜFTECHNIK**

Productive Maintenance Technology