

## Condition Monitoring

# TechNote CM34: Update process for OMNITREND Asset View 1.0 to 2.0

### Step 1: Kernel update

Update all devices with the kernel version that is not older than KW14/2019.

### Step 2: Update Asset View version 1.0 to version 2.0

Run the installer .exe file for version 2.0.


### Step 3: Change the login information for the MQTT communication

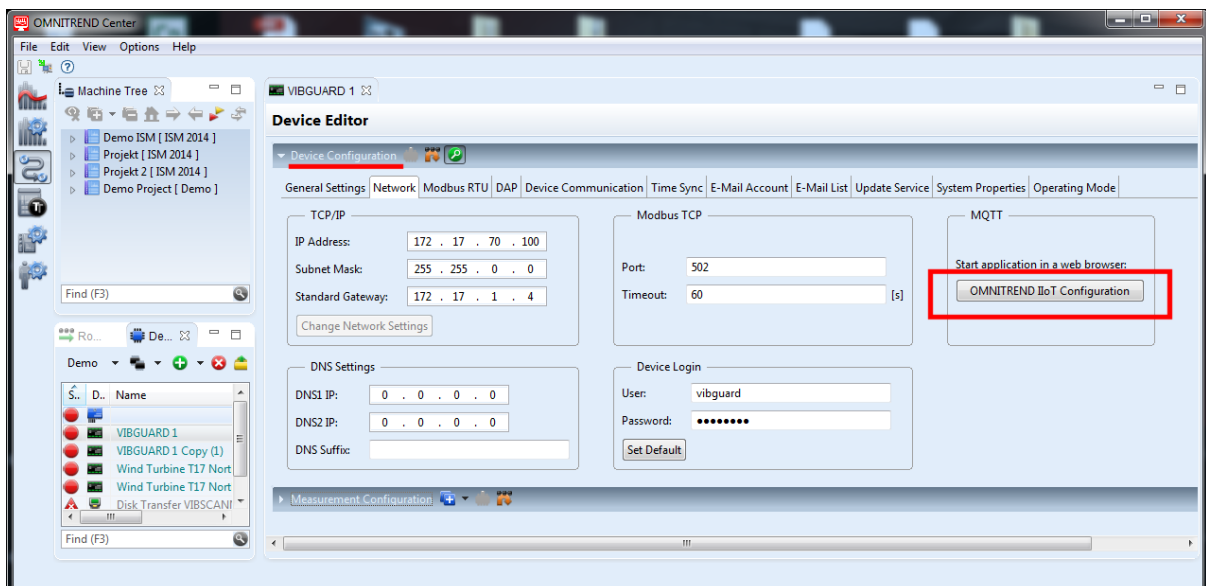
NOTE: With the update to version 2.0 a default login for the asset view MQTT communication is added and needs to be adjusted on the device (see step 4).

If the login details were changed manually in version 1.0 the login details in the broker configuration will be overwritten with the update to version 2.0 and need to be changed again manually.

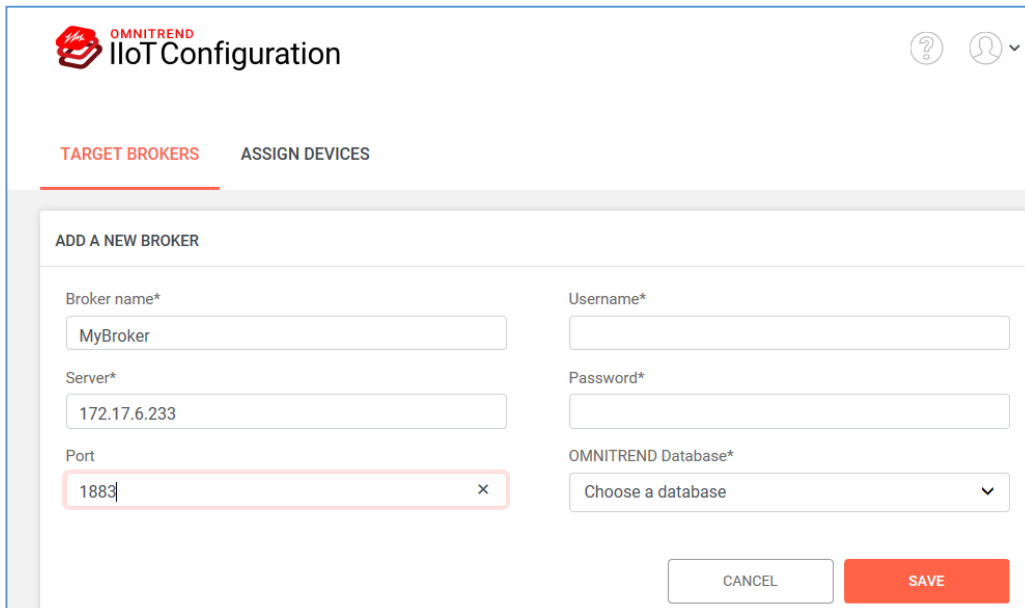
### Step 4: Configure login of MQTT communication for Online Device(s)

In the **OMTC Client** do the following:

- Open the **Device Editor** for the online device that has to be configured.
- Click on  **Expand device configuration** in the **Device Configuration** section.
- Open the **Network** tab.
- Click on the **OMNITREND IIoT Configuration** button in the MQTT field.





- OMNITREND IIoT Configuration starts in a browser.
- Login with your OMTC user name and password (admin user role is required).
- Enter username: user
- Enter password: password



- Click on **SAVE**.

## Step 5: Upload new system .xml to all devices

### Send configuration files to online device

- Close all open device editors.
- Open the respective device editor.
- In the **Device Configuration** section click on  to send the system configuration file to the online device.
- In the **Measurement Configuration** section click on  to send the measurement configuration file to the online device.

### Check data reception in OMNITREND Asset View